

# BRIE COVINGTON

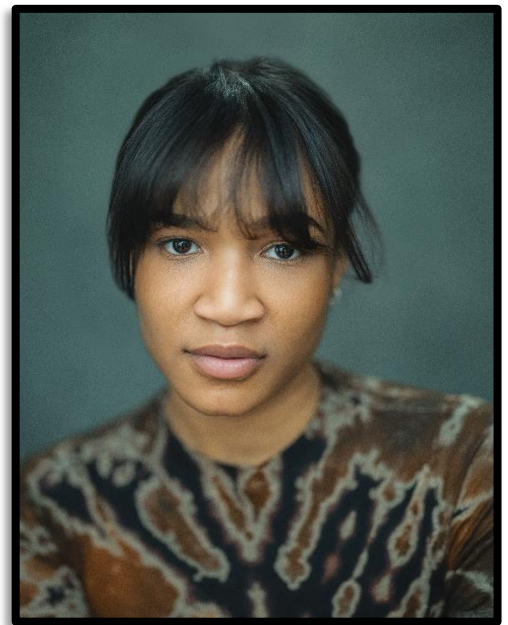
She/They

**Height:** 5'6"

**Eyes:** Brown

**Hair:** Dark Brown

**Voice:** Mezzo Soprano [G3-F5]



## Eligible to work

USA

UK [Pending Graduate Visa]

**SAG Eligible, AEA Membership Candidate Program (EMC)**

## LAMDA

Bertha Holly

Sister Sally

Lindsey Salmon

Ariel/ Iris

Juliet

Ella

*Joe Turner's Come and Gone*

*The Amen Corner*

*The Lovely Bones*

*The Tempest*

*Romeo and Juliet*

*Big White Fog*

Baron Kelly

Nicholai La Barrie

Ola Ince

Sophie Russell

Lawrence Evans

Matt Peover

## Professional Theatre, TV, Film & Radio

Gloria

Maggie

Bran Mulligan

Lead

Lead

*Boeing Boeing*

*1200 Miles From Jerome*

*ANSGT*

*Shadows of the Dust [Short Film]*

*Fuse & Match [Short Film]*

New London Barn Theatre

Ivoryton Playhouse

New Feathers Series

Ali Matlock

Najah Issata Diop

## Other

Stephie With A Why

Principal

Principal

Principal

Principal

*Co-Star [Web-Series]*

*Ulla Beauty*

*Postmates*

*WebMD*

*PwC*

Mirra Kardonne

Commercial

Commercial

Commercial

Commercial

## SKILLS

### Accents

General American [native], New York [native], New Jersey [native], AAVE, Southern American [non-rhotic], California, French, Modern RP

### Dance

Contemporary, Modern, Bachata

### Driving

US Driver's License

### Languages

Italian [conversational with native accent]

### Sport

Yoga, Tennis, Billiards, Badminton, Jump Rope & Double Dutch, Swimming, Tumbling, Cheerleading

### Stage Combat

Unarmed, Single Sword, Rapier & Dagger

### Other

Directing, Writing, Tongue Popping

## TRAINING & AWARDS

LAMDA, MFA Professional Acting, 2023-2025

State University of New York at Fredonia, BFA Acting, 2013-2017

The New York Drama Center, 2019-2021

The Martinez Acting Scholarship

The Chelsea Arts Club Trust Award for Performing Arts

c/o LAMDA, 155 Talgarth Road, London W14 9DA

Tel: (020) 8834 0516 Email: [industry@lamda.ac.uk](mailto:industry@lamda.ac.uk)